

Drawing

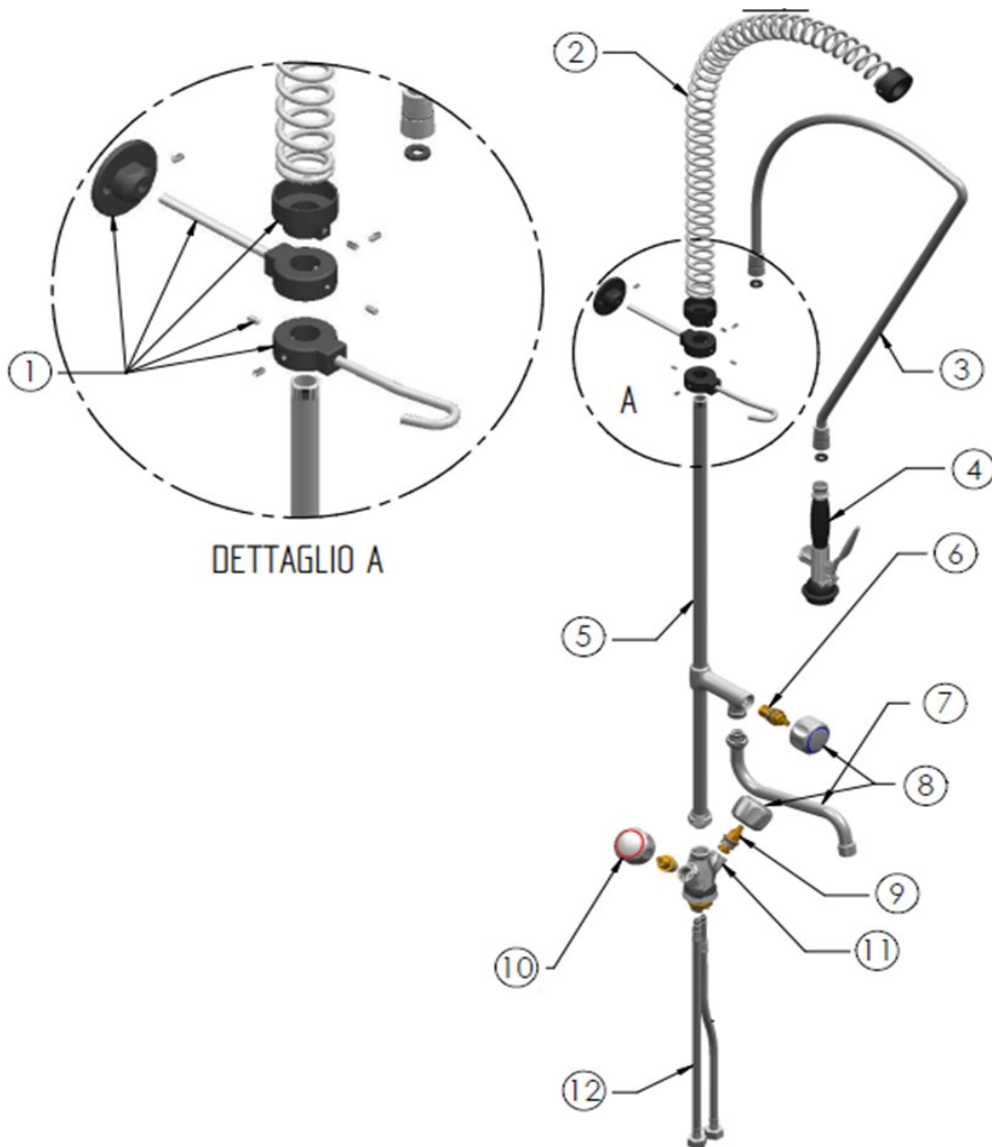


Hendi B.V.
Steenoven 21
3911 TX Rhenen
The Netherlands


Batch #	Appliance part#
000000 and up	970515

Description
Tap with pull out rinser

Date	29-01-2021	Revision #	1.0
Revision	First Bill of Materials (BOM)		



Bill of materials (BOM)

 <b style="font-size: 24px; margin-left: 10px;">HENDI <small style="color: green; margin-left: 10px;">Tools for Chefs</small> Hendi B.V. Steenoven 21 3911 TX Rhenen The Netherlands	Batch #	Appliance part#
	000000 and up	970515
	Description	
Tap with pull out rinser		

Date	29-01-2021	Revision #	1.0
Revision	First Bill of Materials (BOM)		

Item	Description	Part#	Quantity	Remark	Picture
1	Wall holder	942376	1		
2	Spring for pre-rinse unit	942321	1		
3	Shower hose 1/2" - 1/2" 1000mm	942338	1		
4	Spray gun	942345	1		
5	Pipe	n/a	1		
6	Ceramic screw fitting 1/4 turn	944110	1		
7	S spout tube	942352	1		
8	Tap handle cold water	944127	1		
9	Screw fitting low pass (BR.8x24)	944141	1		
10	Tap handle warm water	944134	1		
11	Body	n/a	1		
12	Flex hose set for tap pre rinse unit	942369	1		
*	Faucet mounting kit	959695	1	Not shown in drawing	

n/a -> not available

nss -> not sold separately